

ERRAC ROADMAP FACT SHEET

FEBRUARY 2010

Evaluation and Rail innovation data bank

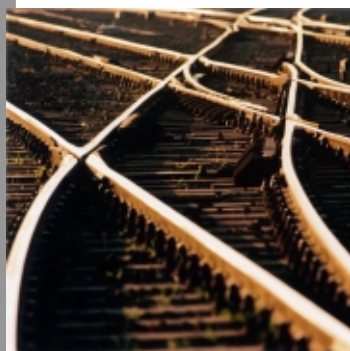
- EWG WP06 -

Leader: L. Velardi (Trentitalia)

Co-leader: M. Robinson (Newrail)



The overall scope of the WP6 Evaluation Working Group, within the ERRAC ROADMAP Project, is to bring forward and enhance the work done in providing essential information and tools on the lessons learnt from the evaluation of past projects, to allow relevant rail related stakeholders and roadmap producers to make better choices and decisions, to achieve a more effective and measurable success of future rail research projects, both in terms of a systemic-oriented use of resources and in terms of concrete outcomes and real market uptake, for the future evolution of the rail industry.



During the past years, a great number of rail research projects have been funded by the European Commission in previous Framework Programmes and billions of euros have been spent to this end. Yet it has not been easy to gain full awareness of all the relevant research that has been carried out. Valuable research results are often lost and the risk of overlappings and/or of generating redundant rail project initiatives is significant.

A good process of thinking in advance, based on lessons learnt from other projects, can lead to a much better focus to help devise new rail research projects that can guarantee concrete market uptake, offering widely acknowledged improvements and solutions for the future rail industry and market in general.



Objectives of WP06

WP06 has two specific objectives:

1. to provide essential information to stakeholders and roadmap producers on lessons learnt from the evaluation of past projects to promote a more systemic and focused approach to the use of funding resources and enhance real market uptake of project results
2. to provide a database of previous and existing national and European projects to support the ROADMAP Work Packages 1-5 and ensure that valuable research undertaken in the past be not forgotten.

WORKING METHOD

WP06 aims to build on the work already carried out by the ERRAC Evaluation Working Group in evaluating over 40 finished projects and to build, update and enhance the existing database with details relating to past and current rail research projects.

During the course of the project, work is carried out to:

- improve methodology to scrutinise and assess the contribution of projects to the ERRAC ROADMAPS and Strategic Rail Research Agenda (SRRA) goals.
- provide inputs to EC Project officers during the negotiation phase and during the course of the projects inputs as to the potential impacts of the deliverables on the ROADMAPS and SRRA.
- evaluate finished rail research projects, analyse success/failure factors and market uptake to communicate this information to the other Work groups and stakeholders in general
- explicate the advisory role that EWG has, to provide ideas for new European and national projects in terms of market uptake or implementation.
- develop the database (also using the TRKC platform) to provide rapid access to information on results of rail research projects, deliverables etc., as well as lessons learnt and short analysis of a possible contribution to the attainment of the goals of the Vision 2020 in coherence with SRRA.

THE EVALUATIONS METHODOLOGY

The methodology for the evaluation of the projects, is based on an analysis of project results and deliverables, together with a set of interviews to project participants and other stakeholders, aimed at determining not so much an evaluation as to the contents of the projects per sé, as rather of the actual implementation and market uptake of the project results once the work has ended, according to the following criteria:

Strong Market Uptake

- Clear evidence of use of products, processes, dissemination of knowledge, tools etc. in several countries/products
- Need for additional projects but only in complementary areas.

Medium Market Uptake

- Some evidence of use of products, processes, limited dissemination of knowledge, tools etc. in a few countries/products
- Follow up project may be necessary
- In the coming years it is possible that the result is going to be used more frequently if not forgotten

Weak Market Uptake

- No known use of products, processes, dissemination of knowledge, tools etc. have been identified anywhere
- No follow up project is needed unless the reason for the market uptake failure is clearly understood and remove

THE EVALUATIONS METHODOLOGY

The interviews carried out by the EWG members for the project evaluations are based on the following questionnaire :

EWG WP06 Questionnaire:

- *Were the results implemented in the design of new products and services?*
- *Were these put into commercial operation?*
- *Is new legislation or standardisation based on the findings from this research project?*
- *Are the results implemented across Europe?*
- *Are the results implemented outside Europe?*
- *Did the project increase competitiveness of the European rail sector? Compared to other transport?*
- *Are the results taken into account when preparing public tenders?*
- *Do the results help facilitate cross-border operation? Intermodal operations?*
- *Can benefits be estimated financially?*
- *Are the results useful for future and new projects?*

WHO WILL BE AFFECTED

Stakeholders include:

- EU FP 7 projects
- Rail operators, Infrastructure Managers, freight forwarders, goods owners
- International organisations such as UIC, UITP, CER
- The Member States' transport ministries.

Disclaimer

ERRAC-ROADMAP

For further information on ERRAC Roadmap please contact:

Giorgio Travaini
ERRAC Secretariat, UNIFE
giorgio.travaini@unife.org

Dennis Schut
ERRAC Project Management, UIC
schut@uic.org

ERRAC Roadmaps Fact Sheets

Although every effort is made to ensure the accuracy of the information in this fact sheets, ERRAC cannot be held responsible for any technical inaccuracies, typographical errors or other errors herein.